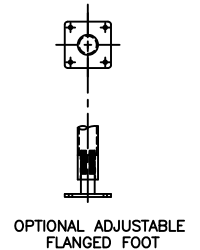


CAPACITY GAL/(LIT)	I.D.	STR SIDE	OAH	O.D.	HTS SIDE	HTS BOTTOM	# ZONES	SHIP WT
200 GAL/(757)	48"	30"	55-3/8"	54-1/2"	20 SF	9.3 SF	1	#1,600
300 GAL/(1136)	54"	36"	62-1/2"	60-1/2"	30 SF	9.3 SF	1	#1,900
400 GAL/(1514)	57"	42"	68-1/2"	63-1/2"	36 SF	13.8 SF	1	#2,300
500 GAL/(1893)	66"	40"	67-3/4"	72-1/2"	40 SF	19.9 SF	2	#2,600
600 GAL/(2271)	66"	48"	75-3/4"	72-1/2"	46 SF	19.9 SF	2	#2,800
800 GAL/(3028)	72"	54"	81-7/8"	78-1/2"	60 SF	23.5 SF	2	#3,250
1,000 GAL/(3785)	72"	66"	93-7/8"	78-1/2"	75 SF	23.5 SF	2	#3,950
1,500 GAL/(5678)	84"	72"	101-3/8"	90-1/2"	96SF	33.3 SF	2	#5,250
2,000 GAL/(7571)	84"	96"	125-3/8"	90-1/2"	136 SF	33.3 SF	3	#6,450
2,500 GAL/(9464)	96"	92"	123-3/4"	102-1/2"	147 SF	44.2 SF	3	#6,600
3,000 GAL/(11356)	96"	108"	139-3/4"	102-1/2"	180 SF	44.2 SF	3	#7,800
4,000 GAL/(15142)	96"	144"	175-3/4"	102-1/2"	248 SF	44.2 SF	3	#10,800



NOTES:

- 1) BASIC HEADER HAS (2) PIPES PER ZONE, # ZONES DENOTES NUMBER OF SIDEWALL ZONES
- 2) PROCESSORS DESIGNED WITH 10% MIN FREEBOARD
- 3) DUAL BALL SPRAY UNIT RATED FOR 80 GPM @ 25 PSIG
- 4) SPRING LOADED SPLIT ROTARY CIP CONTAINMENT SEAL ASSEMBLY IS NOT DESIGNED TO RETAIN INTERNAL PRESSURE

**FELDMEIERS
EQUIPMENT**

575 E. Mill Street
Little Falls, NY 13365

FILE#: L:\PROJECTS\CUTSHEETS\EP-DDSHT.DWG

REV B EFFECTIVE 10/14/08

DIMENSION DRAWING
'EP' FLAT BOTTOM
DOME TOP PROCESSOR