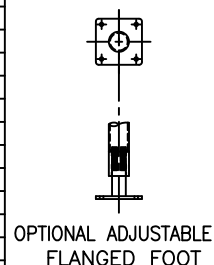


CAPACITY GAL/(LIT)	I.D.	STR SD	OAH	O.D.	ANGLE	HTS SIDE	HTS BOTTOM	# ZONES	# LEGS	WEIGHTS
200 GAL/(757)	48"	24"	73"	54-1/2"	120°	17 SF	8.5 SF	1	4	#1,600
300 GAL/(1136)	54"	30"	82"	60-1/2"	120°	20 SF	10.7 SF	1	4	#1,900
400 GAL/(1514)	57"	30"	84"	62-1/2"	120°	26 SF	11.3 SF	1	4	#2,300
600 GAL/(2271)	60"	48"	102"	66-1/2"	120°	35 SF	14.0 SF	1	4	#2,600
650 GAL/(2461)	66"	42"	99"	72-1/2"	120°	44 SF	18.8 SF	1	4	#2,800
850 GAL/(3218)	72"	48"	108"	78-1/2"	120°	51 SF	23.3 SF	1	4	#3,250
1,050 GAL/(3975)	72"	60"	120"	78-1/2"	120°	64 SF	23.3 SF	2	4	#3,950
1,500 GAL/(5678)	84"	60"	125"	90-1/2"	120°	85 SF	27.0 SF	2	6	#5,250
2,000 GAL/(7571)	84"	84"	149"	90-1/2"	120°	111 SF	27.0 SF	2	6	#6,450
2,500 GAL/(9464)	96"	84"	145"	102-1/2"	140°	131 SF	38.5 SF	2	6	#6,600
3,000 GAL/(11356)	96"	102"	163"	102-1/2"	140°	169 SF	38.5 SF	2	6	#7,100
3,500 GAL/(13249)	96"	120"	181"	102-1/2"	140°	202 SF	38.5 SF	2	6	#8,200
4,000 GAL/(15142)	102"	120"	183"	108-1/2"	140°	210 SF	33.2 SF	3	6	#8800
5,000 GAL/(18927)	110"	126"	192"	116-1/2"	140°	232 SF	53.2 SF	3	8	#9,300
6,000 GAL/(22713)	120"	128"	192"	126-1/2"	150°	253 SF	65.7 SF	3	8	#10,200
8,000 GAL/(30283)	132"	144"	208"	138-1/2"	150°	290 SF	80.2 SF	3	8	#11,300



NOTES:

- 1) BASIC HEADER HAS (2) PIPES PER ZONE, # ZONES DENOTES NUMBER OF SIDEWALL ZONES
- 2) PROCESSORS DESIGNED WITH 10% MIN FREEBOARD
- 3) DUAL BALL SPRAY UNIT RATED FOR 80 GPM @ 25 PSIG
- 4) SPRING LOADED SPLIT ROTARY CIP CONTAINMENT SEAL ASSEMBLY IS NOT DESIGNED TO RETAIN INTERNAL PRESSURE

**FELDMEIER
EQUIPMENT**

575 E. Mill Street
Little Falls, NY 13365

FILE#: L:\PROJECTS\CUTSHEETS\EP-DDSHT.DWG

REV D EFFECTIVE 10/14/08

DIMENSION DRAWING
'EPC' CONE BOTTOM
DOME TOP PROCESSOR