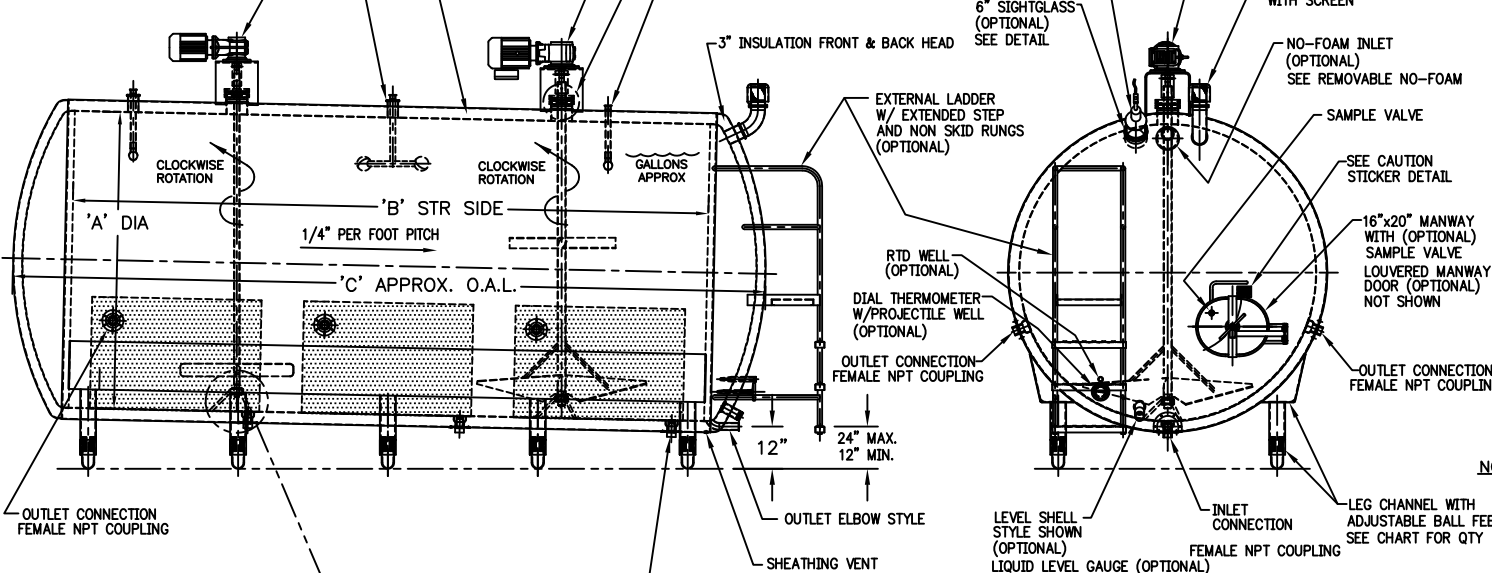


(OPTIONAL) REMOVABLE SINGLE OR DUAL SPRAY UNIT  
 REMOVABLE DUAL SPRAY UNIT STYLE SHOWN  
 SEE DETAIL FOR OPTIONAL  
 REMOVABLE SPRAY UNIT

VERTICAL 'G' STYLE 2-BLADED AGITATOR  
 (OPTIONAL)

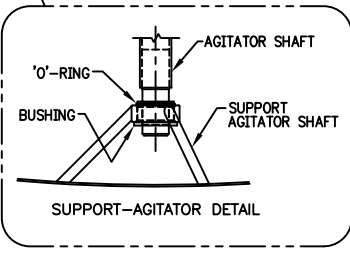
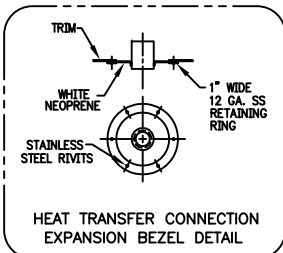


CAPACITY GALLONS	DIM 'A'	DIM 'B'	DIM 'C'	NO. OF LEGS	SHIP WT LBS.
1,000	66"	60"	90"	4	2,500
1,500	66"	96"	126"	6	3,300
2,000	84"	72"	108"	4	3,550
2,500	84"	96"	132"	6	4,300
3,000	84"	120"	156"	6	4,800
4,000	96"	120"	160"	6	5,350
5,000	96"	150"	190"	8	6,150
6,000	96"	180"	227"	10	7,200
7,000	96"	225"	265"	12	7,600
6,000	110"	137"	180-1/2"	8	7,200
7,000	110"	160"	204-1/2"	10	7,600
8,000	110"	180"	231-1/2"	12	8,200
10,000	110"	240"	284-1/2"	14	11,000
12,000	120"	240"	286-3/4"	14	12,000
14,000	132"	222"	270"	14	14,000
14,000	143"	192"	241"	12	13,000

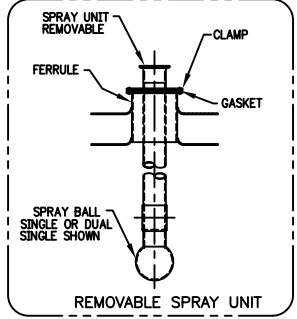
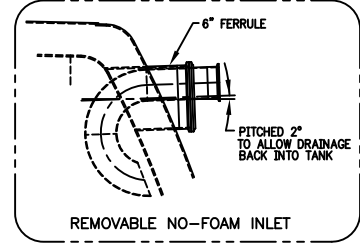
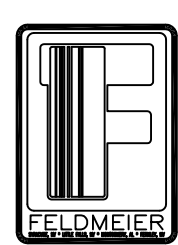
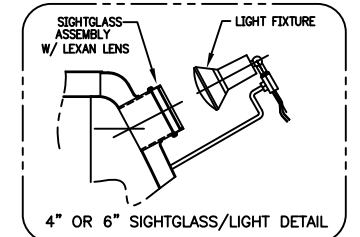
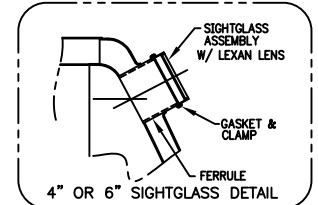
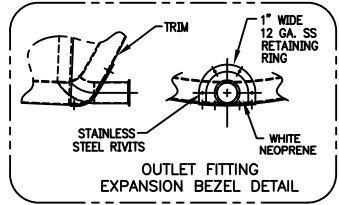
\*OTHER SIZES AVAILABLE  
 CONSULT FELDMIEER EQUIPMENT SALES  
 FOR INFORMATION AND PRICING

NOTES:

- 1.) ALL DIMENSIONS AND FITTING LOCATIONS TO BE VERIFIED ON THE SUBMITTAL DRAWINGS.
- 2.) SEE ACCESSORY LISTING FOR ALL OTHER AVAILABLE ACCESSORIES.
- 3.) SINGLE SPRAY UNIT RATED FOR 40 GPM @ 25 PSIG
- 4.) DUAL SPRAY UNIT RATED FOR 80 GPM @ 25 PSIG



HEAT TRANSFER SURFACE ON THE LINING SHELL ONLY FEMALE NPT COUPLINGS  
 FULL FLOODED AMMONIA SWEET WATER-HOLDING ONLY (OPTIONAL)



**CAUTION**  
 MANWAY DOOR MUST BE OPEN DURING C.I.P.  
 CAUTION STICKER DETAIL

**FELDMIEER EQUIPMENT**  
 575 E.MILL STREET  
 LITTLE FALLS, NY 13365  
 L:\PROJECTS\CUT SHEETS\G-TANK.DWG

\*GH=WITHOUT HEAT TRANSFER SURFACE  
 \*GHW=WITH HEAT TRANSFER SURFACE  
 REV - EFFECTIVE 11/16/04  
 \*GH & GHW-TANK HORIZONTAL-INSULATED STANDARD DIMENSIONS