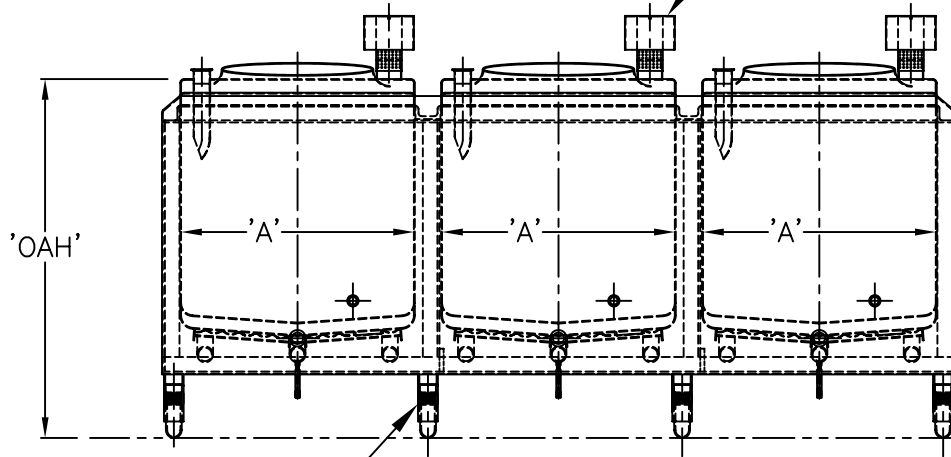
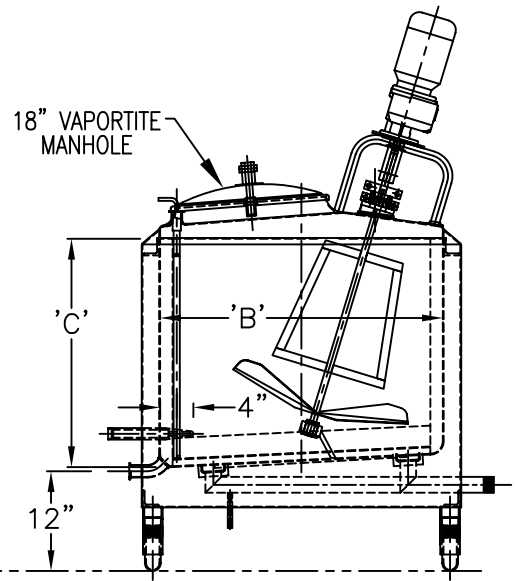


PLAN VIEW



ELEVATION



SIDE VIEW

FRAME W/(8)  
LEGS W/ADJ.  
BALL FEET  
TYPE 304SS

**NOTE:**

1) FOR MIX & BLEND OPTION'S SEE (1) COMPARTMENT DRAWING

CAPACITY GALLON	'A'	'B'	'C'	'D'	'E'	'OAH'	LEGS	HTS BOTTOM PER COMP	EST WT LB
100	28"	34"	27-7/16"	39"	96"	44"	8	3.5 SQ. FT	1,620#
150	28"	34"	39-11/16"	39"	96"	56"	8	3.5 SQ. FT	1,820#
200	38"	44"	31-1/2"	49"	126"	48"	8	8.0 SQ. FT	2,060#
250	38"	44"	38"	49"	126"	54"	8	8.0 SQ. FT	2,255#
300	38"	44"	44-15/16"	49"	126"	61"	8	8.0 SQ. FT	3,110#
400	50"	56"	36-7/8"	62"	163"	53"	8	14.5 SQ. FT	4,220#
500	50"	56"	45-1/8"	62"	163"	61"	8	14.5 SQ. FT	4,805#
600	50"	56"	53-3/8"	62"	163"	70"	8	14.5 SQ. FT	5,385#
800	66"	60"	50-15/16"	67"	212"	67"	8	21.5 SQ. FT	7,200#
1,000	66"	60"	62-5/8"	67"	212"	79"	8	21.5 SQ. FT	8,110#

**NOTES:**

- 1) BASIC HEADER DESIGN, (1) INLET, (2) OUTLETS 1-1/4" NPT MALE HTS CONNECTIONS
- 2) HEAT TRANSFER SURFACE RATED FOR 100 PSIG AT 350 DEG. F STANDARD
- 3) ASME 'U' CERTIFICATION AVAILABLE
- 4) SINGLE SPRAY UNIT RATED FOR 40 GPM @ 25 PSIG

**FELDMEIER  
EQUIPMENT**

575 E.MILL STREET  
LITTLE FALLS, NY 13365

L:\PROJECTS\CUT SHEETS\MB3COMP.DWG

REV - EFFECTIVE 9/2004

DIMENSION DRAWING  
MIX & BLEND (3) COMPARTMENT  
INSULATED TANK