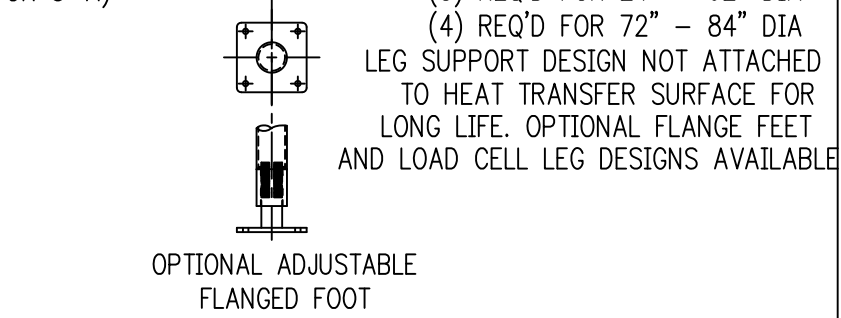


CAPACITY	I.D.	STR SD	OAH	O.D.	HTS BOTTOM	SHIP WT
50 GAL	36"	12"	53"	42-1/2"	12.2 SF	#750
100 GAL	36"	16"	57"	42-1/2"	12.2 SF	#850
100 GAL	44"	12"	61"	49-1/2"	16.2 SF	#950
150 GAL	44"	16"	62"	49-1/2"	16.2 SF	#1,050
200 GAL	48"	12"	59"	54-1/2"	23.2 SF	#1,150
250 GAL	48"	20"	67"	54-1/2"	23.2 SF	#1,250
250 GAL	54"	18"	71"	60-1/2"	27.3 SF	#1,350
300 GAL	62"	18"	71"	68-1/2"	37.3 SF	#1,450
350 GAL	54"	24"	77"	60-1/2"	27.3 SF	#1,550
500 GAL	62"	24"	96"	68-1/2"	37.3 SF	#1,750
600 GAL	72"	28"	87"	78-1/2"	54.4 SF	#1,950
1,000 GAL	72"	36"	89"	78-1/2"	54.4 SF	#2,150
1,000 GAL	84"	24"	77"	90-1/2"	71 SF	#4,750
1,200 GAL	72"	54"	122"	78-1/2"	54.4 SF	#5,450
2,000 GAL	84"	72"	136"	90-1/2"	71 SF	#6,150
2,000 GAL	95"	48"	118"	102-1/2"	87 SF	#8,250

NOTES:
 1) HEAT TRANSFER SURFACE RATED FOR 150 PSIG AT 400 DEG. F STANDARD
 2) ASME "U" CERTIFICATION AVAILABLE.
 3) COVERS NOT DESIGNED TO CONTAIN CIP.
 4) KETTLES DESIGNED WITH APPROX 10" FREEBOARD



FELDMEIER EQUIPMENT

575 E. MILL STREET
LITTLE FALLS, NY 13365

L:\PROJECTS\CUT SHEETS\KETTLE-B&C.DWG

REV B EFFECTIVE 10/28/08

DIMENSION DRAWING
DIMPLE JACKETED
INSULATED KETTLE-B&C