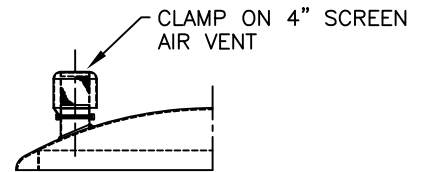
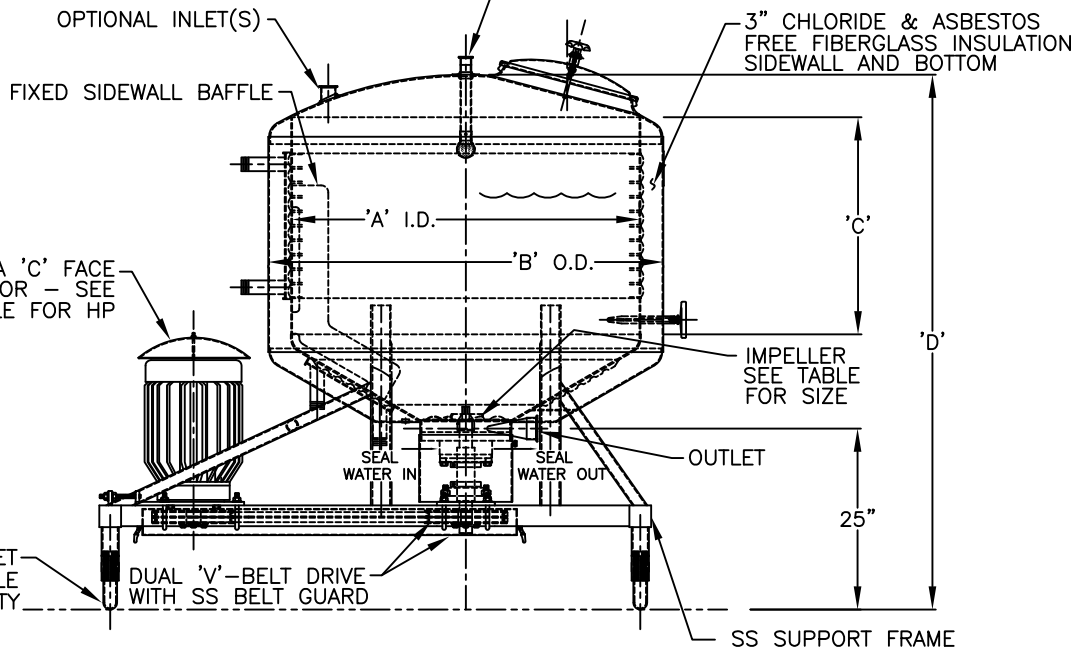
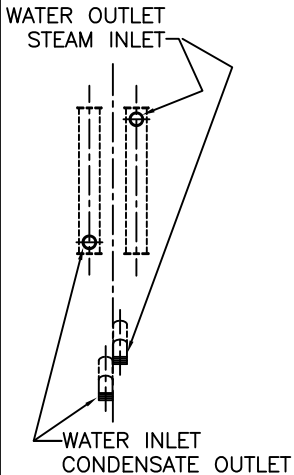


PLAN VIEW



FELDMEIER CHANNEL WALL
HEAT TRANSFER SURFACE
CONNECTIONS
1-1/2" MALE NPT STANDARD
OTHER SIZES AVAILABLE

OPTIONAL REMOVABLE SPRAYBALL
40 GPM @ 25 PSI SUPPLY PRESSURE



ELEVATION

HEAT TRANSFER CONNECTION ORIENTATION

MOTOR NOTES:

THE MOTOR HORSEPOWER IS BASED ON PRODUCTS WITH A MAX. VISCOSITY OF 2,500 CPS. CONSULT FACTORY FOR HIGHER VISCOSITIES. THE V-BELT DRIVE ALLOWS FOR INCREASED OR DECREASED IMPELLER SPEED AND MAY BE ALTERED IN THE FIELD IF REQUIRED. THIS FEATURE IS ALSO USEFUL TO MAINTAIN IMPELLER SPEED ON 50 HZ MOTORS. THE OFFSET, SHAFT DOWN MOTOR ORIENTATION PREVENTS MOISTURE ENTRANCE INTO THE MOTOR THROUGH THE SHAFT.

SEAL NOTES

THE RAPIDMIXER IS SUPPLIED WITH A SINGLE MECHANICAL SEAL AND HAS A OPTIONAL WATER PURGED DOUBLE MECHANICAL SEAL.

HEAT TRANSFER SURFACE NOTES:

THE RAPIDMIXER SIDEWALL IS FABRICATED WITH FELDMEIER CHANNEL WALL CONSTRUCTION. THE CHANNEL WALL SURFACE CAN BE USED WITH WATER OR STEAM AND IS RATED AT 100 PSI, 350 DEG F. ASME "U" CERTIFICATION IS AVAILABLE ON THE HEAT TRANSFER SURFACE

APPLICATION NOTES:

THE RAPIDMIXER PROVIDES VIOLENT, HIGH-SHEAR AGITATION WELL SUITED TO RAPIDLY INCORPORATE POWDERS IN LIQUIDS, AND BLEND MISCIBLE LIQUIDS. IT IS ALSO USED TO REMOVE ENTRAINED AIR FROM ICE CREAM RE-RUN, AND TO BLEND FLAVORS.

CAPACITY	MOTOR HP	IMPELLER SIZE	'A'	'B'	'C'	'D'	'E'	'F'	HTS AREA SIDE SQ. FT.	HTS AREA BOTTOM SQ. FT.	ESTIMATED SHIP WT
100 GAL	15 HP	10"	36"	42-1/2"	28"	67-5/8"	60-3/4"	31-3/4"	9.5	4.9	#1325
150 GAL	20 HP	10"	42"	48-1/2"	28"	70-1/8"	64-3/4"	35-1/4"	12.75	6.75	#1500
200 GAL	25 HP	12"	48"	54-1/2"	28"	72"	67-1/4"	37-1/4"	14.5	8.5	#1675
300 GAL	40 HP	12"	48"	54-1/2"	42"	86"	76-1/4"	45-1/4"	27	8.5	#1930
400 GAL	40 HP	12"	54"	60-1/2"	42"	88-1/2"	82-3/4"	51-1/4"	32.75	10.7	#2170
500 GAL	50 HP	12"	60"	66-1/2"	42"	91-1/8"	82-3/4"	51-1/4"	36.5	14	#2410
600 GAL	50 HP	12"	60"	66-1/2"	48"	97-1/8"	82-3/4"	51-1/4"	44.5	14	#2525

FELDMEIER EQUIPMENT

575 E.MILL STREET
LITTLE FALLS, NY 13365

L:\PROJECTS\Cut Sheets\RAPIDMIX RD INS.DWG

REV - EFFECTIVE 10/12/08

DIMENSION DRAWING
ROUND INSULATED
RAPID MIXER